



Entry 1 School Information

Created: 07/12/2017 • Last updated: 08/01/2017

Please be advised that you will need to complete this cover page (including signatures) before all of the other tasks assigned to you by your authorizer are visible on your task page. While completing this task, please ensure that you select the correct authorizer **(as of June 30, 2017)** or you may not be assigned the correct tasks.

a. SCHOOL NAME AND BEDS# VERTUS CS (REGENTS)

(Select name from the drop down menu)

b. CHARTER AUTHORIZER Regents-Authorized Charter School

(For technical reasons, please re-select authorizer name from the drop down menu).

c. DISTRICT / CSD OF LOCATION Rochester

d1. SCHOOL INFORMATION

	PRIMARY ADDRESS	PHONE NUMBER	FAX NUMBER	EMAIL ADDRESS
	21 Humboldt St. Rochester, NY 14609			

d2. PHONE CONTACT NUMBER FOR AFTER HOURS EMERGENCIES

Contact Name	Jason Mellen
Title	COO
Emergency Phone Number (###-###-####)	

e. SCHOOL WEB ADDRESS (URL) www.vertusschool.org

f. DATE OF INITIAL CHARTER 12/2013

g. DATE FIRST OPENED FOR INSTRUCTION 09/2014

h1. APPROVED SCHOOL MISSION (Regents, NYCDOE, and Buffalo BOE authorized schools only)

MISSION STATEMENT

To develop leaders of character for the community and the workplace.

h2. KEY DESIGN ELEMENTS (Regents, NYCDOE, and Buffalo BOE authorized schools only)

KEY DESIGN ELEMENTS (Brief description of Key design elements are those general aspects of the school that are innovative or unique to the school’s mission and goals, are core to the school’s overall design, and are critical to its success. The design elements may include a specific content area focus; unique student populations to be served; specific educational programs or pedagogical approaches; unique calendar, schedule, or configurations of students and staff; and/or innovative organizational structures and systems.

Variable 1	Strong Relationships: Students at Vertus will be surrounded by adults who help them build knowledge, skills and character; provide them with social and emotional support; and assist them in navigating the risks of urban neighborhoods. All staff will be hired based on alignment with the mission and demonstrated ability to connect with and lead young men. The school’s system of small Learning Teams, each led by a full-time adult Preceptor who will be responsible for the complete well being of his students, ensures that every student has a strong mentor. Students will support each other and provide strong peer leadership. Teachers will know each student and offer academic support tailored to each student’s individual needs. The school will have strong relationships with families and partners.
Variable 2	Personalized Year-Round Academics: With a year-round program offering of more than 200 instructional days (20 more than a traditional school), and a 7.5 hour day (an hour more than a traditional school), the school will be a haven for young men who may have few places outside of school where they are safe and supported. Each student will be assessed upon entry to the school and, in concert with his Preceptor and family, will develop an Individual Life Plan (ILP) that contains his goals for academics, career preparation and character development. Academic coursework will take place in Learning Labs that blend on-line lessons with individual support and small classroom experiences.

Variable 3	Character Development: Students will participate in daily seminars to develop character, enhance literacy and presentation skills, and prepare for the workplace and life. Character education will be modeled after practices found in great charter schools and in the best private high schools for boys. Seminars will include topics in leadership, entrepreneurship, philosophy, health and well being, as well as practical topics such as interviewing and behavior in the workplace. Students will participate in field trips, workplace visits, and cultural opportunities that increase awareness of the wider world.
Variable 4	Career Preparation: Every student will have the opportunity to take courses toward a career award or certification that prepares him for a good job. Career programs will prepare students for living wage, 21st century jobs and will link students to local employers with growing employment needs.
Variable 5	(No response)
Variable 6	(No response)
Variable 7	(No response)
Variable 8	(No response)
Variable 9	(No response)
Variable 10	(No response)

i. TOTAL ENROLLMENT ON JUNE 30, 2017 227

j. GRADES SERVED IN SCHOOL YEAR 2016-17

Check all that apply

Grades Served	9, 10, 11
---------------	-----------

k1. DOES THE SCHOOL CONTRACT WITH A CHARTER OR EDUCATIONAL MANAGEMENT ORGANIZATION? No

I1. FACILITIES

Does the school maintain or operate multiple sites?

	No, just one site.
--	--------------------

I2. SCHOOL SITES

Please list the sites where the school will operate for the upcoming school year.

	Physical Address	Phone Number	District/CSD	Grades Served at Site	School at Full Capacity at Site	Facilities Agreement
Site 1 (same as primary site)	21 Humboldt St. Rochester, NY 14609		ROCHESTER CITY SD	9,10,11,12	Yes	Rent/Lease
Site 2						
Site 3						

I2a. Please provide the contact information for Site 1.

	Name	Work Phone	Alternate Phone	Email Address
School Leader	Leigh McGuigan			
Operational Leader	Jason Mellen			
Compliance Contact	Jason Trzeciak			
Complaint Contact				

m1. Is the school or are the school sites co-located? No

n1. Were there any revisions to the school’s charter during the 2016-17 school year? (Please include approved or pending material and non-material charter revisions). Yes

n2. Summary of Charter Revisions

	Category (Select Best Description)	Specific Revision (150 word limit)	Date Approved by BOT (if applicable)	Date Approved by Authorizer (if applicable)
1	Change in schedule/calendar	1. The school calendar was revised to reflect a school year of at least 180 days from September to June and a mandatory summer school of at least 20 days (a change necessitated in order to receive the full per pupil funding for all students). 2. School hours were revised for the 2017-18 school year, changing from 8:30 a.m. to 4:30 p.m. to 8:30 a.m. to 4:00 p.m.	1. 9/19/2016 - 2. 2/27/2017	1.10/5/16 2. 4/28/17
2	Change in admissions/enrollment policy	Enrollment policy: to clarify that returning students have an enrollment preference and that the school can accept students to fill openings throughout the year	4/24/2017	
		Revisions were made to the charter application narrative based on better understanding school and student needs		

3	Other	<p>since the application was made, including: Job titles: Changed to make them clearer, more realistic and easier to fill. Career credentials: Eliminated requirement for all students to have a full technical credential, given the number of students who want to go directly to college.</p>	5/22/2017	5/3/17
4	Change in Bylaws	<p>Revisions to the bylaws to make them clearer and more accurately reflect the rules for video meetings.</p>	4/24/2017	
5	Change in design or educational program	<p>Minor revisions to goals to reflect: 1) changes in NYSED graduation pathways since the charter was approved; and 2) increasing focus on college and elimination of a career credential requirement for all students Replacing traditional grade levels with academic achievement levels ranging from Novice to Professional Minor revisions to the program to reflect changes in light of experience and student needs</p>	5/22/2017	5/3/17

o. Name and Position of Individual(s) Who Completed the 2016-17 Annual Report. Jason Trzeciak, Business Manager

p. Our signatures below attest that all of the information contained herein is truthful and accurate and that this charter school is in compliance with all aspects of its charter, and with all pertinent Federal, State, and local laws, regulations, and rules. We understand that if any information in any part of this report is found to have been deliberately misrepresented, that will constitute grounds for the revocation of our charter. Check **YES** if you agree and then use the mouse on your PC or the stylist on your mobile device to sign your name).

Yes

Signature, Head of Charter School

Leigh McGuigan

Signature, President of the Board of Trustees

Bryan D. Hickman

Date

2017/08/01

Thank you.



Entry 2 NYS School Report Card Link

Last updated: 07/12/2017

1. NEW YORK STATE REPORT CARD

[https://data.nysed.gov/reportcard.php?
year=2016&instid=800000082490](https://data.nysed.gov/reportcard.php?year=2016&instid=800000082490)

**Provide a direct URL or web link
to the most recent New York
State School Report Card for the
charter school (See
<https://reportcards.nysed.gov/>).**

(Charter schools completing year one
will not yet have a School Report Card or
link to one. Please type "URL is not
available" in the space provided).



Entry 3 Progress Toward Goals

Created: 07/12/2017 • Last updated: 07/28/2017

PROGRESS TOWARD CHARTER GOALS

The following tables reflect formatting in the online portal required for Board of Regents-authorized charter schools and NYCDOE-authorized charter schools only. Schools should list Progress Toward Charter Goals by August 1, 2017. If the goals are based on student performance data that the school will not have access to before August 1, 2017 (e.g., the NYS Assessment results), please state this in the last column. The information can be updated when available. Please complete and submit no later than November 1, 2017.

1. ACADEMIC STUDENT PERFORMANCE GOALS

2016-17 Progress Toward Attainment of Academic Goals

	Academic Student Performance Goal	Measure Used to Evaluate Progress Toward Attainment of Goal	Goal - Met or Not Met	If Not Met, Describe Efforts School Will Take
Academic Goal 1	Students average at least 1.5 years annual growth in Reading and Math on the NWEA MAPS test	NWEA average RIT score	Met	
Academic Goal 2	More than 90% of students pass 5 Regents exams or meet an approved alternate graduation pathway for a Regents diploma	Regents pass rate and graduation pathway		N/A - First Graduating Cohort will be in 2017-18
Academic Goal 3	More than 75% of students graduate with college credits	Transcripts from colleges participating in our dual credit programs		N/A - First Graduating Cohort will be in 2017-18
Academic Goal 4	Graduation cohorts have an average ACT score of 19	ACT scores of students		N/A - First Graduating Cohort will be in 2017-18
Academic Goal 5	Four and five year graduation rate exceeds 80%	Graduation rate		N/A - First Graduating Cohort will be in 2017-18
Academic Goal 6	Student attendance exceeds 90%	Attendance tracking data	Not Met	Attendance Rate was 87% Continue to train staff and follow up on student/family outreach; we have started a new school program called Brothers' Keeper with a primary focus on attendance
Academic Goal 7				
Academic Goal 8				

2. Do have more academic goals to add? No

3. Do have more academic goals to add? No

4. ORGANIZATIONAL GOALS

2016-17 Progress Toward Attainment of Organizational Goals

	Organizational Goal	Measure Used to Evaluate Progress	Goal - Met or Not Met	If Not Met, Describe Efforts School Will Take
Org Goal 1	85% net positive responses on connection questions on staff surveys	Staff Surveys	Met	
Org Goal 2	No more than 10% undesirable staff attrition	Staff retention data	Met	
Org Goal 3				
Org Goal 4				
Org Goal 5				

5. Do you have more organizational goals to add? No

6. FINANCIAL GOALS

2016-17 Progress Toward Attainment of Financial Goals

	Financial Goals	Measure Used to Evaluate Progress	Goal - Met or Not Met	If Not Met, Describe Efforts School Will Take
Financial Goal 1	Raise at least \$200,000	Fundraising	Met	
Financial Goal 2				
Financial Goal 3				
Financial Goal 4				
Financial Goal 5				



Entry 4 Expenditures per Child

Created: 07/28/2017 • Last updated: 08/01/2017

Financial Information

This information is required of ALL charter schools. Provide the following measures of fiscal performance of the charter school in Appendix B (Total Expenditures and Administrative Expenditures Per Child):

1. Total Expenditures Per Child

To calculate '**Total Expenditures per Child**' take total expenditures (from the unaudited 2016-17 Schedule of Functional Expenses) and divide by the year end FTE student enrollment. (Integers Only. No dollar signs or commas).

Note: The information on the Schedule of Functional Expenses on pages 41-43 of the Audit Guide can help schools locate the amounts to use in the two per pupil calculations: <http://www.p12.nysed.gov/psc/AuditGuide.html>

Line 1: Total Expenditures	4537412
Line 2: Year End FTE student enrollment	244
Line 3: Divide Line 1 by Line 2	18604

2. Administrative Expenditures per Child

To calculate **'Administrative Expenditures per Child'** To calculate "Administrative Expenditures per Child" first *add* together the following:

1. Take the relevant portion from the 'personnel services cost' row and the 'management and general' column (from the unaudited 2016-17 Schedule of Functional Expenses)
2. Any contracted administrative/management fee paid to other organizations or corporations
3. Take the total from above and divide it by the year-end FTE enrollment. The relevant portion that must be included in this calculation is defined as follows:

Administrative Expenditures: Administration and management of the charter school includes the activities and personnel of the offices of the chief school officer, the finance or business offices, school operations personnel, data management and reporting, human resources, technology, etc. It also includes those administrative and management services provided by other organizations or corporations on behalf of the charter school for which the charter school pays a fee or other compensation. Do not include the FTE of personnel whose role is to directly support the instructional program.

Notes:
The information on the Schedule of Functional Expenses on pages 41-43 of the Audit Guide can help schools locate the amounts to use in the two per pupil calculations:
<http://www.p12.nysed.gov/psc/AuditGuide.html>.
Employee benefit costs or expenditures should not be reported in the above calculations.

Line 1: Relevant Personnel Services Cost (Row)	332738
Line 2: Management and General Cost (Column)	296208
Line 3: Sum of Line 1 and Line 2	628946
Line 5: Divide Line 3 by the Year End FTE student enrollment	2579

Thank you.

Vertus Charter School

PROJECTED BUDGET FOR 2017-2018

July 1, 2017 to June 30, 2018

Please Note: The student enrollment data is entered below in the Enrollment Section beginning in row 155. This will populate the data in row 10.

	REGULAR EDUCATION	SPECIAL EDUCATION	OTHER	FUNDRAISING	MANAGEMENT & GENERAL	TOTAL
Total Revenue	4,193,985	1,049,130	-	200,000	-	5,443,115
Total Expenses	3,431,713	1,844,033	-	30,382	483,477	5,789,605
Net Income	762,272	(794,903)	-	169,618	(483,477)	(346,490)
Actual Student Enrollment	245	91				-
Total Paid Student Enrollment	-	-				-

PROGRAM SERVICES

SUPPORT SERVICES

REGULAR EDUCATION	SPECIAL EDUCATION	OTHER	FUNDRAISING	MANAGEMENT & GENERAL	TOTAL
----------------------	----------------------	-------	-------------	-------------------------	-------

REVENUE

REVENUES FROM STATE SOURCES

Per Pupil Revenue

CY Per Pupil Rate

Rochester City School District
Brockport Central School District
Brighton Central School District
Churchville-Chili Central School District
East Irondequoit Central School District
Gates-Chili Central School District
Greece Central School District
Rush-Henrietta Central School District
Webster Central School District

\$13,090.00
\$13,448.00
\$11,745.00
\$11,122.00
\$12,557.00
\$13,359.00
\$11,979.00
\$13,330.00
\$11,872.00

3,958,416	-	-	-	-	3,958,416
-	-	-	-	-	-
-	-	-	-	-	-
-	-	-	-	-	-
-	-	-	-	-	-
-	-	-	-	-	-
-	-	-	-	-	-
-	-	-	-	-	-
-	-	-	-	-	-
3,958,416					3,958,416

Special Education Revenue

Grants

Stimulus

Other

Other State Revenue

-	907,200	-	-	-	907,200
-	-	-	-	-	-
-	-	-	-	-	-
-	-	-	-	-	-

TOTAL REVENUE FROM STATE SOURCES

3,958,416	907,200				4,865,616
-----------	---------	--	--	--	-----------

REVENUE FROM FEDERAL FUNDING

IDEA Special Needs

Title I

Title Funding - Other

School Food Service (Free Lunch)

Grants

Charter School Program (CSP) Planning & Implementation

Other

Other Federal Revenue

-	63,796	-	-	-	63,796
187,732	62,268	-	-	-	250,000
3,885	1,288	-	-	-	5,173
-	-	-	-	-	-
-	-	-	-	-	-
-	-	-	-	-	-
-	-	-	-	-	-

TOTAL REVENUE FROM FEDERAL SOURCES

191,617	127,352				318,969
---------	---------	--	--	--	---------

LOCAL and OTHER REVENUE

Contributions and Donations, Fundraising

Erate Reimbursement

Interest Income, Earnings on Investments,

NYC-DYCD (Department of Youth and Community Developmt.)

Food Service (Income from meals)

Text Book

Other Local Revenue

-	-	-	200,000	-	200,000
43,952	14,578	-	-	-	58,530
-	-	-	-	-	-
-	-	-	-	-	-
-	-	-	-	-	-
-	-	-	-	-	-
-	-	-	-	-	-

TOTAL REVENUE FROM LOCAL and OTHER SOURCES

43,952	14,578		200,000		258,530
--------	--------	--	---------	--	---------

TOTAL REVENUE

4,193,985	1,049,130		200,000		5,443,115
-----------	-----------	--	---------	--	-----------

EXPENSES

Vertus Charter School

PROJECTED BUDGET FOR 2017-2018

July 1, 2017 to June 30, 2018

Please Note: The student enrollment data is entered below in the Enrollment Section beginning in row 155. This will populate the data in row 10.

	REGULAR EDUCATION	SPECIAL EDUCATION	OTHER	FUNDRAISING	MANAGEMENT & GENERAL	TOTAL
Total Revenue	4,193,985	1,049,130	-	200,000	-	5,443,115
Total Expenses	3,431,713	1,844,033	-	30,382	483,477	5,789,605
Net Income	762,272	(794,903)	-	169,618	(483,477)	(346,490)
Actual Student Enrollment	245	91				-
Total Paid Student Enrollment	-	-				-

		PROGRAM SERVICES			SUPPORT SERVICES		
		REGULAR EDUCATION	SPECIAL EDUCATION	OTHER	FUNDRAISING	MANAGEMENT & GENERAL	TOTAL
ADMINISTRATIVE STAFF PERSONNEL COSTS	No. of Positions						
Executive Management	1.75	95,310	49,200	-	6,180	46,110	196,800
Instructional Management	2.00	118,647	39,353	-	-	-	158,000
Deans, Directors & Coordinators	2.00	141,257	66,688	-	-	-	207,945
CFO / Director of Finance	1.00	8,000	8,000	-	-	64,000	80,000
Operation / Business Manager	1.00	10,000	5,000	-	-	35,000	50,000
Administrative Staff	4.00	29,800	14,900	-	-	104,300	149,000
TOTAL ADMINISTRATIVE STAFF	12	403,014	183,141		6,180	249,410	841,745
INSTRUCTIONAL PERSONNEL COSTS							
Teachers - Regular	12.00	405,502	134,498	-	-	-	540,000
Teachers - SPED	6.00	-	259,404	-	-	-	259,404
Substitute Teachers	-	-	-	-	-	-	-
Teaching Assistants	-	-	-	-	-	-	-
Specialty Teachers	9.00	231,138	156,862	-	-	-	388,000
Aides	-	-	-	-	-	-	-
Therapists & Counselors	2.00	-	-	-	-	-	-
Other	25.00	732,727	273,198	-	-	-	1,005,925
TOTAL INSTRUCTIONAL	54	1,369,366	823,963				2,193,329
NON-INSTRUCTIONAL PERSONNEL COSTS							
Nurse	-	-	-	-	-	-	-
Librarian	-	-	-	-	-	-	-
Custodian	1.00	5,356	2,678	-	-	18,746	26,780
Security	-	-	-	-	-	-	-
Other	-	-	-	-	-	-	-
TOTAL NON-INSTRUCTIONAL	1	5,356	2,678			18,746	26,780
SUBTOTAL PERSONNEL SERVICE COSTS	67	1,777,736	1,009,782		6,180	268,156	3,061,854
PAYROLL TAXES AND BENEFITS							
Payroll Taxes		171,584	97,463	-	596	25,882	295,525
Fringe / Employee Benefits		215,525	122,421	-	749	32,510	371,205
Retirement / Pension		61,479	34,921	-	214	9,274	105,887
TOTAL PAYROLL TAXES AND BENEFITS		448,588	254,805		1,559	67,666	772,617
TOTAL PERSONNEL SERVICE COSTS		2,226,324	1,264,586		7,739	335,822	3,834,472
CONTRACTED SERVICES							
Accounting / Audit		-	-	-	-	26,000	26,000
Legal		5,806	3,298	-	20	876	10,000
Management Company Fee		-	-	-	-	-	-
Nurse Services		-	-	-	-	-	-
Food Service / School Lunch		-	-	-	-	-	-
Payroll Services		-	-	-	-	6,300	6,300
Special Ed Services		-	-	-	-	-	-
Titlment Services (i.e. Title I)		-	-	-	-	-	-

Vertus Charter School

PROJECTED BUDGET FOR 2017-2018

July 1, 2017 to June 30, 2018

Please Note: The student enrollment data is entered below in the Enrollment Section beginning in row 155. This will populate the data in row 10.

	REGULAR EDUCATION	SPECIAL EDUCATION	OTHER	FUNDRAISING	MANAGEMENT & GENERAL	TOTAL
Total Revenue	4,193,985	1,049,130	-	200,000	-	5,443,115
Total Expenses	3,431,713	1,844,033	-	30,382	483,477	5,789,605
Net Income	762,272	(794,903)	-	169,618	(483,477)	(346,490)
Actual Student Enrollment	245	91				-
Total Paid Student Enrollment	-	-				-

	PROGRAM SERVICES			SUPPORT SERVICES		
	REGULAR EDUCATION	SPECIAL EDUCATION	OTHER	FUNDRAISING	MANAGEMENT & GENERAL	TOTAL
Other Purchased / Professional / Consulting	35,998	20,447	-	10,125	5,430	72,000
TOTAL CONTRACTED SERVICES	41,804	23,745		10,145	38,606	114,300
SCHOOL OPERATIONS						
Board Expenses	-	-	-	-	700	700
Classroom / Teaching Supplies & Materials	184,710	61,265	-	-	-	245,975
Special Ed Supplies & Materials	-	-	-	-	-	-
Textbooks / Workbooks	-	-	-	-	-	-
Supplies & Materials other	56,158	18,627	-	-	-	74,785
Equipment / Furniture	29,892	13,016	-	46	1,979	44,933
Telephone	18,550	10,537	-	64	2,798	31,950
Technology	99,168	56,329	-	345	14,959	170,800
Student Testing & Assessment	4,693	1,557	-	-	-	6,250
Field Trips	14,268	4,732	-	-	-	19,000
Transportation (student)	43,113	15,260	-	14	613	59,000
Student Services - other	28,664	9,507	-	-	-	38,171
Office Expense	52,963	30,084	-	184	7,989	91,220
Staff Development	46,755	23,576	-	119	5,150	75,600
Staff Recruitment	6,967	3,958	-	24	1,051	12,000
Student Recruitment / Marketing	45,056	14,944	-	-	-	60,000
School Meals / Lunch	2,628	872	-	-	-	3,500
Travel (Staff)	2,032	1,154	-	7	307	3,500
Fundraising	-	-	-	10,000	-	10,000
Other	54,191	21,171	-	47	2,041	77,450
TOTAL SCHOOL OPERATIONS	689,809	286,589		10,850	37,586	1,024,834
FACILITY OPERATION & MAINTENANCE						
Insurance	29,030	16,490	-	101	4,379	50,000
Janitorial	33,095	18,798	-	115	4,992	57,000
Building and Land Rent / Lease	267,080	151,705	-	928	40,287	460,000
Repairs & Maintenance	14,515	8,245	-	50	2,188	24,999
Equipment / Furniture	-	-	-	-	-	-
Security	13,935	7,915	-	48	2,102	24,000
Utilities	29,030	16,490	-	101	4,379	50,000
TOTAL FACILITY OPERATION & MAINTENANCE	386,685	219,643		1,344	58,327	665,999
DEPRECIATION & AMORTIZATION	87,091	49,469	-	303	13,137	150,000
DISSOLUTION ESCROW & RESERVES / CONTINGENCY	-	-	-	-	-	-
TOTAL EXPENSES	3,431,713	1,844,033		30,382	483,477	5,789,605
NET INCOME	762,272	(794,903)	-	169,618	(483,477)	(346,490)

ENROLLMENT - *School Districts Are Linked To Above Entries*

Rochester City School District

REGULAR EDUCATION	SPECIAL EDUCATION	TOTAL ENROLLED
233	81	314

Vertus Charter School

PROJECTED BUDGET FOR 2017-2018

July 1, 2017 to June 30, 2018

Please Note: The student enrollment data is entered below in the Enrollment Section beginning in row 155. This will populate the data in row 10.

	REGULAR EDUCATION	SPECIAL EDUCATION	OTHER	FUNDRAISING	MANAGEMENT & GENERAL	TOTAL
Total Revenue	4,193,985	1,049,130	-	200,000	-	5,443,115
Total Expenses	3,431,713	1,844,033	-	30,382	483,477	5,789,605
Net Income	762,272	(794,903)	-	169,618	(483,477)	(346,490)
Actual Student Enrollment	245	91				-
Total Paid Student Enrollment	-	-				-

PROGRAM SERVICES

SUPPORT SERVICES

	REGULAR EDUCATION	SPECIAL EDUCATION	OTHER	FUNDRAISING	MANAGEMENT & GENERAL	TOTAL
Brockport Central School District	2		2			
Brighton Central School District	-	2	2			
Churchville-Chili Central School District	-	2	2			
East Irondequoit Central School District	6		6			
Gates-Chili Central School District	-	2	2			
Greece Central School District	-	2	2			
Rush-Henrietta Central School District	4		4			
Webster Central School District	-	2	2			
TOTAL ENROLLMENT	245	91	336			
REVENUE PER PUPIL	17,118	11,529	-			
EXPENSES PER PUPIL	14,007	20,264	-			

Assumptions
DESCRIPTION OF ASSUMPTIONS - Please note assumptions when applicable
Anticipate majority of General Education revenue from Rochester City School District
Anticipated based on student population
Information provided by Title I
Title II
Expected donations based on communication with donors
Information provided by E-Rate
List exact titles and staff FTE"s (Full time equivalent)

Assumptions
DESCRIPTION OF ASSUMPTIONS - Please note assumptions when applicable
Curriculum development, bus drivers, architects/building, operations/finance/data
Increased student population - adding new class in 2017-18
Increased student population - adding new class in 2017-18
Summer session - transportation not provided by districts; Bus expenses
Conferences, school visits
Majority is provided by Rochester City School District
Includes College Tuition
Anticipated fixed-assets expenses for computers for increased student population, as
Regular vs. Special Ed breakdown based on ratios in 2016-17

[illegible]

**Disclosure of Financial Interest by a Current or Proposed Charter School
Education Corporation Trustee**

Trustee Name:
Stephen Jacobs

**Name of Charter School Education Corporation (for an unmerged school, this is
the Charter School Name):**

Vertus Charter School

List all positions held on the education corporation board (e.g., president, treasurer,
parent representative).

Board Member. Board Search Committee Chair

1. Is the trustee an employee of any school operated by the Education Corporation?
☐ Yes ☒ No

If Yes, for each school, please provide a description of the position(s) you hold, your
responsibilities, your salary and your start date.

2. Is the trustee an employee or agent of the management company or institutional
partner of the charter school(s) governed by the Education Corporation?

☐ Yes ☒ No

If Yes, for each school, please provide a description of the position(s) you hold, your
responsibilities, your salary and your start date.

3. Identify each interest/transaction (and provide the requested information) that you or
any of your immediate family members or any persons who live with you in your
house have held or engaged in with the charter school(s) governed by the Education
Corporation during the time you have served on the board, and in the six-month
period prior to such service. If there has been no such financial interest or
transaction, write **None**. Please note that if you answered **Yes** to Questions 2-4
above, you need not disclose again your employment status, salary, etc.

Date(s)	Nature of Financial Interest/Transaction	Steps taken to avoid a conflict of interest, (e.g., did not vote, did not participate in discussion)	Name of person holding interest or engaging in transaction and relationship to yourself
NONE			

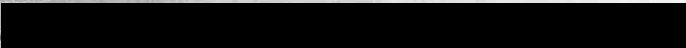
4. Identify each individual, business, corporation, union association, firm, partnership, committee proprietorship, franchise holding company, joint stock company, business or real estate trust, non-profit organization, or other organization or group of people doing business with the school(s) governed by the Education Corporation and in which such entity, during the time of your tenure as a trustee, you and/or your immediate family member(s) or person(s) living in your house had a financial interest or other relationship. If you are a member, director, officer or employee of an organization formally partnered with the school(s) that is/are doing business with the school(s) through a management or services agreement, please identify only the name of the organization, your position in the organization, and the relationship between such organization and the school(s). If there was no financial interest, write **None**.

Organization conducting business with the school(s)	Nature of business conducted	Approximate value of the business conducted	Name of Trustee and/or immediate family member of household holding an interest in the organization conducting business with the school(s) and the nature of the interest	Steps Taken to Avoid Conflict of Interest
None				

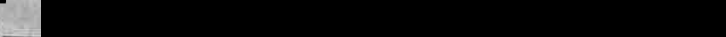

Signature

7/28/17
Date

Please note that this document is considered a public record and as such, may be made available to members of the public upon request under the Freedom of Information Law. Personal contact information provided below will be redacted.

Business Telephone: 

Business Address: 

E-mail Address: 

Home Telephone: 

Home Address: 

**Disclosure of Financial Interest by a Current or Proposed Charter School
Education Corporation Trustee**

Trustee Name:

Kenneth J. Wasnack

Name of Charter School Education Corporation (for an unmerged school, this is the Charter School Name):

Veritas High School

1. List all positions held on the education corporation board (e.g., president, treasurer, parent representative). Board Member

2. Is the trustee an employee of any school operated by the Education Corporation?
☐ Yes ☒ No

If Yes, for each school, please provide a description of the position(s) you hold, your responsibilities, your salary and your start date.

3. Is the trustee an employee or agent of the management company or institutional partner of the charter school(s) governed by the Education Corporation?
☐ Yes ☒ No

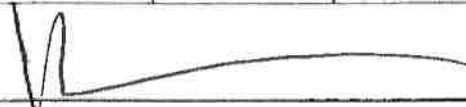
If Yes, for each school, please provide a description of the position(s) you hold, your responsibilities, your salary and your start date.

4. Identify each interest/transaction (and provide the requested information) that you or any of your immediate family members or any persons who live with you in your house have held or engaged in with the charter school(s) governed by the Education Corporation during the time you have served on the board, and in the six-month period prior to such service. If there has been no such financial interest or transaction, write **None**. Please note that if you answered **Yes** to Questions 2-4 above, you need not disclose again your employment status, salary, etc.

Date(s)	Nature of Financial Interest/Transaction	Steps taken to avoid a conflict of interest, (e.g., did not vote, did not participate in discussion)	Name of person holding interest or engaging in transaction and relationship to yourself
<u>N/A</u>			

5. Identify each individual, business, corporation, union association, firm, partnership, committee proprietorship, franchise holding company, joint stock company, business or real estate trust, non-profit organization, or other organization or group of people doing business with the school(s) governed by the Education Corporation and in which such entity, during the time of your tenure as a trustee, you and/or your immediate family member(s) or person(s) living in your house had a financial interest or other relationship. If you are a member, director, officer or employee of an organization formally partnered with the school(s) that is/are doing business with the school(s) through a management or services agreement, please identify only the name of the organization, your position in the organization, and the relationship between such organization and the school(s). If there was no financial interest, write **None**.

Organization conducting business with the school(s)	Nature of business conducted	Approximate value of the business conducted	Name of Trustee and/or immediate family member of household holding an interest in the organization conducting business with the school(s) and the nature of the interest	Steps Taken to Avoid Conflict of Interest
N/A				


Signature

7/28/2017
Date

Please note that this document is considered a public record and as such, may be made available to members of the public upon request under the Freedom of Information Law. Personal contact information provided below will be redacted.

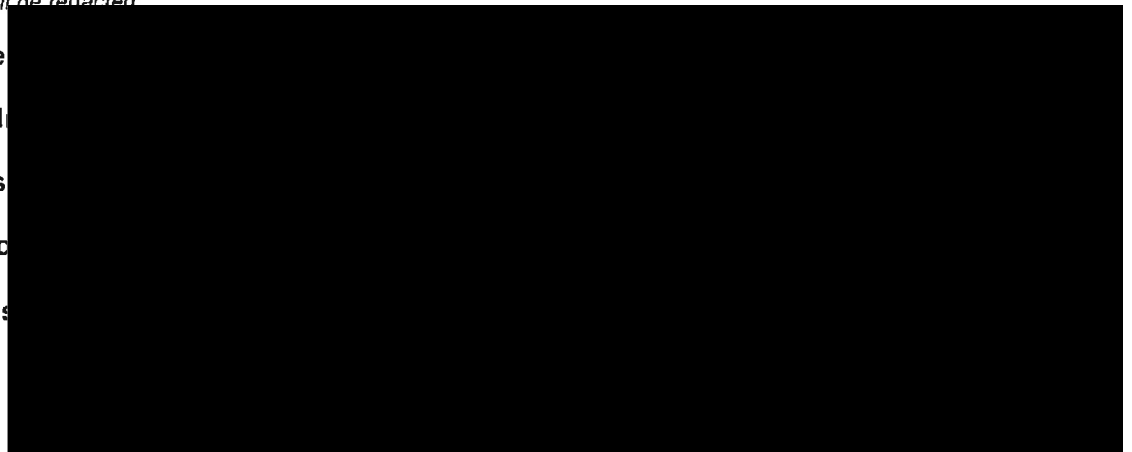
Business Tele

Business Add

E-mail Address

Home Telepho

Home Address



<p align="center">Disclosure of Financial Interest by a Current or Proposed Charter School Education Corporation Trustee</p>

Trustee Name:

Todd Oldham

Name of Charter School Education Corporation (for an unmerged school, this is the Charter School Name):

Monroe Community College

1. List all positions held on the education corporation board (e.g., president, treasurer, parent representative). *Secretary (through last year) none presently*

2. Is the trustee an employee of any school operated by the Education Corporation?
 ___ Yes ___ No

If Yes, for each school, please provide a description of the position(s) you hold, your responsibilities, your salary and your start date.

3. Is the trustee an employee or agent of the management company or institutional partner of the charter school(s) governed by the Education Corporation?
 ___ Yes ___ No

If Yes, for each school, please provide a description of the position(s) you hold, your responsibilities, your salary and your start date.

4. Identify each interest/transaction (and provide the requested information) that you or any of your immediate family members or any persons who live with you in your house have held or engaged in with the charter school(s) governed by the Education Corporation during the time you have served on the board, and in the six-month period prior to such service. If there has been no such financial interest or transaction, write **None**. Please note that if you answered **Yes** to Questions 2-4 above, you need not disclose again your employment status, salary, etc.

Date(s)	Nature of Financial Interest/Transaction	Steps taken to avoid a conflict of interest, (e.g., did not vote, did not participate in discussion)	Name of person holding interest or engaging in transaction and relationship to yourself
<i>Please write "None" if applicable. Do not leave this space blank.</i>			

5. Identify each individual, business, corporation, union association, firm, partnership, committee proprietorship, franchise holding company, joint stock company, business or real estate trust, non-profit organization, or other organization or group of people doing business with the school(s) governed by the Education Corporation and in which such entity, during the time of your tenure as a trustee, you and/or your immediate family member(s) or person(s) living in your house had a financial interest or other relationship. If you are a member, director, officer or employee of an organization formally partnered with the school(s) that is/are doing business with the school(s) through a management or services agreement, please identify only the name of the organization, your position in the organization, and the relationship between such organization and the school(s). If there was no financial interest, write **None**.

Organization conducting business with the school(s)	Nature of business conducted	Approximate value of the business conducted	Name of Trustee and/or immediate family member of household holding an interest in the organization conducting business with the school(s) and the nature of the interest	Steps Taken to Avoid Conflict of Interest
<i>Please write "None" if applicable. Do not leave this space blank.</i> None				


Signature

7/12/2017
Date

Please note that this document is considered a public record and as such, may be made available to members of the public upon request under the Freedom of Information Law. Personal contact information provided below will be redacted.

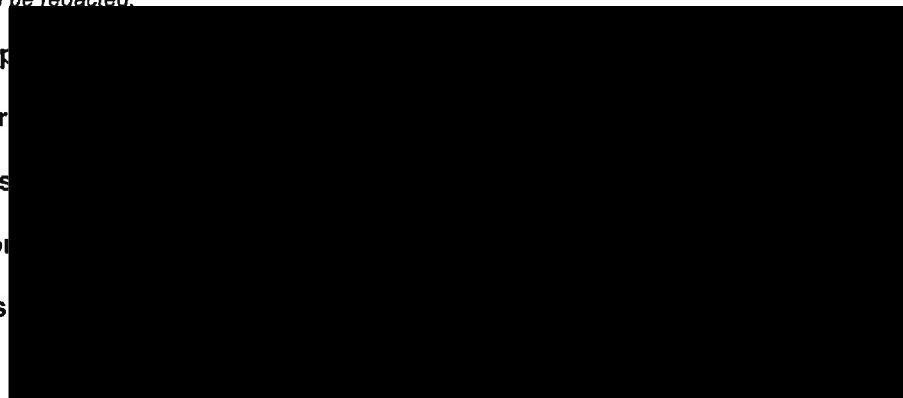
Business Telep

Business Addr

E-mail Address

Home Telephon

Home Address



<p align="center">Disclosure of Financial Interest by a Current or Proposed Charter School Education Corporation Trustee</p>

Trustee Name:

Evan A. Gallina

Name of Charter School Education Corporation (for an unmerged school, this is the Charter School Name):

Vertus Charter School

1. List all positions held on the education corporation board (e.g., president, treasurer, parent representative).

Treasurer

2. Is the trustee an employee of any school operated by the Education Corporation?
 ___ Yes ☒ No

If **Yes**, for each school, please provide a description of the position(s) you hold, your responsibilities, your salary and your start date.

3. Is the trustee an employee or agent of the management company or institutional partner of the charter school(s) governed by the Education Corporation?

___ Yes ☒ No

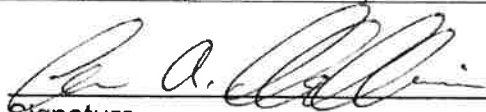
If **Yes**, for each school, please provide a description of the position(s) you hold, your responsibilities, your salary and your start date.

4. Identify each interest/transaction (and provide the requested information) that you or any of your immediate family members or any persons who live with you in your house have held or engaged in with the charter school(s) governed by the Education Corporation during the time you have served on the board, and in the six-month period prior to such service. If there has been no such financial interest or transaction, write **None**. Please note that if you answered **Yes** to Questions 2-4 above, you need not disclose again your employment status, salary, etc.

Date(s)	Nature of Financial Interest/Transaction	Steps taken to avoid a conflict of interest, (e.g., did not vote, did not participate in discussion)	Name of person holding interest or engaging in transaction and relationship to yourself
<p><i>Please write "None" if applicable. Do not leave this space blank.</i></p> <p><i>None</i></p>			

5. Identify each individual, business, corporation, union association, firm, partnership, committee proprietorship, franchise holding company, joint stock company, business or real estate trust, non-profit organization, or other organization or group of people doing business with the school(s) governed by the Education Corporation and in which such entity, during the time of your tenure as a trustee, you and/or your immediate family member(s) or person(s) living in your house had a financial interest or other relationship. If you are a member, director, officer or employee of an organization formally partnered with the school(s) that is/are doing business with the school(s) through a management or services agreement, please identify only the name of the organization, your position in the organization, and the relationship between such organization and the school(s). If there was no financial interest, write **None**.

Organization conducting business with the school(s)	Nature of business conducted	Approximate value of the business conducted	Name of Trustee and/or immediate family member of household holding an interest in the organization conducting business with the school(s) and the nature of the interest	Steps Taken to Avoid Conflict of Interest
<i>Please write "None" if applicable. Do not leave this space blank.</i>				
None				


Signature

7/12/17
Date

Please note that this document is considered a public record and as such, may be made available to members of the public upon request under the Freedom of Information Law. Personal contact information provided below will be redacted.

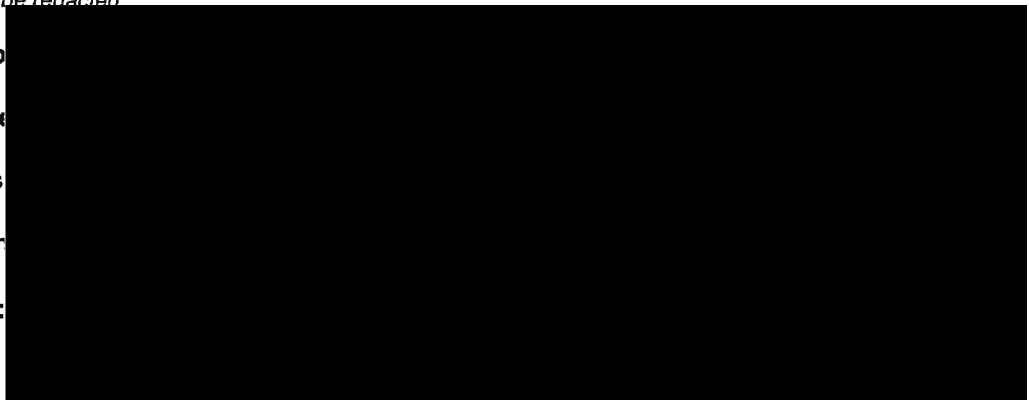
Business Telephone:

Business Address:

E-mail Address:

Home Telephone:

Home Address:



**Disclosure of Financial Interest by a Current or Proposed Charter School
Education Corporation Trustee**

Trustee Name:

Tyrone C. Kelly

Name of Charter School Education Corporation (for an unmerged school, this is the Charter School Name):

VERTUS

1. List all positions held on the education corporation board (e.g., president, treasurer, parent representative). PRESIDENT

2. Is the trustee an employee of any school operated by the Education Corporation?
☐ Yes ☒ No

If **Yes**, for each school, please provide a description of the position(s) you hold, your responsibilities, your salary and your start date.

3. Is the trustee an employee or agent of the management company or institutional partner of the charter school(s) governed by the Education Corporation?
☐ Yes ☒ No

If **Yes**, for each school, please provide a description of the position(s) you hold, your responsibilities, your salary and your start date.

4. Identify each interest/transaction (and provide the requested information) that you or any of your immediate family members or any persons who live with you in your house have held or engaged in with the charter school(s) governed by the Education Corporation during the time you have served on the board, and in the six-month period prior to such service. If there has been no such financial interest or transaction, write **None**. Please note that if you answered **Yes** to Questions 2-4 above, you need not disclose again your employment status, salary, etc.

Date(s)	Nature of Financial Interest/Transaction	Steps taken to avoid a conflict of interest, (e.g., did not vote, did not participate in discussion)	Name of person holding interest or engaging in transaction and relationship to yourself
<i>Please write "None" if applicable. Do not leave this space blank.</i> <u>NONE</u>	<u>NONE</u>	<u>NONE</u>	<u>NONE</u>

5. Identify each individual, business, corporation, union association, firm, partnership, committee proprietorship, franchise holding company, joint stock company, business or real estate trust, non-profit organization, or other organization or group of people doing business with the school(s) governed by the Education Corporation **and** in which such entity, during the time of your tenure as a trustee, you and/or your immediate family member(s) or person(s) living in your house had a financial interest or other relationship. If you are a member, director, officer or employee of an organization formally partnered with the school(s) that is/are doing business with the school(s) through a management or services agreement, please identify only the name of the organization, your position in the organization, and the relationship between such organization and the school(s). If there was no financial interest, write **None**.

Organization conducting business with the school(s)	Nature of business conducted	Approximate value of the business conducted	Name of Trustee and/or immediate family member of household holding an interest in the organization conducting business with the school(s) and the nature of the interest	Steps Taken to Avoid Conflict of Interest
<i>Please write "None" if applicable. Do not leave this space blank.</i>				
NONE	NONE	NONE	NONE	NONE


Signature

7/24/17
Date

Please note that this document is considered a public record and as such, may be made available to members of the public upon request under the Freedom of Information Law. Personal contact information provided below will be redacted.

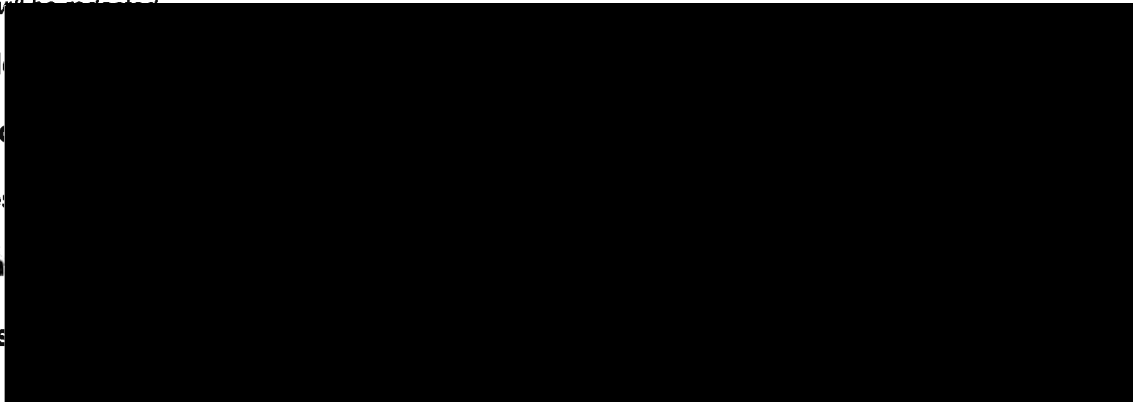
Business Telephone

Business Address

E-mail Address

Home Telephone

Home Address



<p align="center">Disclosure of Financial Interest by a Current or Proposed Charter School Education Corporation Trustee</p>

Trustee Name: MICHAEL P. MANDINA

Name of Charter School Education Corporation (for an unmerged school, this is the Charter School Name): VERTUS

1. List all positions held on the education corporation board (e.g., president, treasurer, parent representative). BOARD MEMBER

2. Is the trustee an employee of any school operated by the Education Corporation?
 ___ Yes ☒ No

If **Yes**, for each school, please provide a description of the position(s) you hold, your responsibilities, your salary and your start date.

3. Is the trustee an employee or agent of the management company or institutional partner of the charter school(s) governed by the Education Corporation?
 ___ Yes ☒ No

If **Yes**, for each school, please provide a description of the position(s) you hold, your responsibilities, your salary and your start date.

4. Identify each interest/transaction (and provide the requested information) that you or any of your immediate family members or any persons who live with you in your house have held or engaged in with the charter school(s) governed by the Education Corporation during the time you have served on the board, and in the six-month period prior to such service. If there has been no such financial interest or transaction, write **None**. Please note that if you answered **Yes** to Questions 2-4 above, you need not disclose again your employment status, salary, etc.

N.A. NONE

Date(s)	Nature of Financial Interest/Transaction	Steps taken to avoid a conflict of interest, (e.g., did not vote, did not participate in discussion)	Name of person holding interest or engaging in transaction and relationship to yourself
Please write "None" if applicable. Do not leave this space blank.			

**Disclosure of Financial Interest by a Current or Proposed Charter School
Education Corporation Trustee**

Trustee Name:

Bryan D. Hickman

Name of Charter School Education Corporation (for an unmerged school, this is the Charter School Name):

Vertus Charter School

1. List all positions held on the education corporation board (e.g., president, treasurer, parent representative).

Chairman, Member of finance committee

2. Is the trustee an employee of any school operated by the Education Corporation?
 ___ Yes ☒ No

If **Yes**, for each school, please provide a description of the position(s) you hold, your responsibilities, your salary and your start date.

3. Is the trustee an employee or agent of the management company or institutional partner of the charter school(s) governed by the Education Corporation?

___ Yes ☒ No

If **Yes**, for each school, please provide a description of the position(s) you hold, your responsibilities, your salary and your start date.

4. Identify each interest/transaction (and provide the requested information) that you or any of your immediate family members or any persons who live with you in your house have held or engaged in with the charter school(s) governed by the Education Corporation during the time you have served on the board, and in the six-month period prior to such service. If there has been no such financial interest or transaction, write **None**. Please note that if you answered **Yes** to Questions 2-4 above, you need not disclose again your employment status, salary, etc.

Date(s)	Nature of Financial Interest/Transaction	Steps taken to avoid a conflict of interest, (e.g., did not vote, did not participate in discussion)	Name of person holding interest or engaging in transaction and relationship to yourself
Spring 2013 - Spring 2017	Lent \$40,000 to Vertus. It has been repaid.	Waived all interest payments. Did not benefit financially.	Bryan Hickman.



Entry 9 BOT Table

Created: 07/12/2017 • Last updated: 07/26/2017

(tab across or use scroll bar at bottom of table)

1. Current Board Member Information

	Trustee Name	Email Addresses	Position on the Board	Committee Affiliations	Voting Member Per By-Laws? (Y/N)	Area of Expertise, and/or Additional Role at School (parent, staff member, etc.)	Number of Terms Served and Length of Each (Include election date and term expiration)	Number of Board Mtgs Attended during 2016-17?
1	Bryan Hickman		Chair/ Board President	Finance Committee	Yes	Finance, Charter school best practices, Development, Community Affairs, Charter Sectors	3 - 1st term 1/16/14 - 1/16/17 3 - 2nd term 1/17 - 1/20	12
2	Evan Gallina		Treasurer	Finance Committee Chair	Yes	Finance, Facility Development and Management	3 - 2/22/16 - 2/19	11

3	Stephen Jacobs		Trustee/Member	Nominating Committee Chair	Yes	Technology sector, Higher education, specifically Rochester Institute of Technology, Program design	- 1/16/14 - 1/16/15; Reelected to 3 year term on 1/8/15 - 1/18	7
4	Ty Kelly		Vice Chair/Vice President	Nominating Committee Chair	Yes	Youth development, youth employment, Community affairs and relations, Org. management, relationship with Wegmans	3 - 1st term 5/8/14 - 5/31/17; 3 - 2nd term 5/17 - 5/20	9
5	Michael Mandina		Trustee/Member	Finance Committee	Yes	President, Optimax; Chairperson, FAME	3 - 1st term 1/16/14 - 1/16/17; 3 - 2nd term 1/17 - 1/20	8
						Vice President for		

6	Todd Oldham	[REDACTED]	Secretary	Nominating Committee Chair	Yes	Economic Development and Innovative Workforce Services, Monroe Community College	3 - 1/16/14 - 1/16/16 Reelected to a 3 year term on 2/22/16 - 2/19	6
7	Ken Wasnock	[REDACTED]	Trustee/Member	Finance Committee	Yes	Finance	3 - 1/16/14 - 1/16/15 Reelected to 3 year term on 1/8/15 - 1/18; (Resigned - 3.2.17)	5 or less
8								
9								
10								
11								
12								
13								
14								
15								
16								
17								
18								

19								
20								

2. Total Number of Members on June 30, 2016 6

3. Total Number of Members Joining the Board 2016-17 School Year 0

4. Total Number of Members Departing the Board during the 2016-17 School Year 1

5. Number of Voting Members 2016-17, as set by the by-laws, resolution or minutes 7

6. Number of Board Meetings Conducted in the 2016-17 School Year 12

7. Number of Board Meetings Scheduled for the [2017-18](#) School Year 12

Thank you.



Entry 10 - Board Meeting Minutes

Last updated: 07/12/2017

[Instructions for submitting minutes of the BOT monthly meetings](#)

Regents, NYCDOE, and Buffalo BOE authorized schools must either provide a link to a complete set of minutes that are posted on the charter school website, or upload a complete set of board meeting minutes from July 2016--June 2017.

A. Provide a URL link to the <http://www.vertusschool.org/board/>
Monthly Board Meeting Minutes
which are posted on the School's
web page.

OR

B. Upload All Monthly Board Meeting Minutes

Combine into one .PDF file

(No response)



Entry 11 Enrollment and Retention of Special Populations

Created: 07/27/2017 • Last updated: 08/01/2017

Instructions for Reporting Enrollment and Retention Strategies

Describe the efforts the charter school has made in 2016-2017 toward meeting targets to attract and retain enrollment of students with disabilities, English language learners, and students who are economically disadvantaged. In addition, describe the school's plans for meeting or making progress toward meeting its enrollment and retention targets in 2017-2018.

Recruitment/Attraction Efforts Toward Meeting Targets

	Describe Efforts Toward Meeting Recruitment Targets 2016-17)	Describe Plans Toward Meeting Recruitment Targets 2017-18)
Economically Disadvantaged	<p>A large majority of students in the city of Rochester are economically disadvantaged. In 2016-17, Vertus sent several personalized mailers to every family in the city with a young man entering 9th and 10th grades, advertised extensively on WDKX, the most popular radio station in the Black community, advertised on 4 large billboards, had staff and others go door-to-door in low income neighborhoods, upgraded our website and Facebook page, and distributed information at libraries, community centers, community organizations, churches, barber shops, hair salons, and in several schools. Vertus also recruited at community events, and got the word out through free media coverage, e.g., TV, radio and newspapers.</p>	<p>Most students' families in Rochester are economically disadvantaged. Vertus' general recruitment efforts are focused on families in the City of Rochester. The marketing / recruiting plan for 2017-18 includes approximately 7 widely advertised family information sessions and Open Houses / Open Gyms at the school, 6 direct mailings to all Rochester families with young men entering 9th and 10th grade, ads on 7 billboards over 3 months, ads at the RTS Transit Center and in 40 buses, 300 lawn signs, WDKX ads several times daily for several months featuring Vertus students, targeted ads and boosts on Facebook, including several videos about Vertus' programs, Google ads that "follow" people showing interest in the school, and use of free media, e.g., TV.</p>
English Language	<p>In addition to our general recruitment activities, Vertus specifically sought to recruit English language learners by distributing the school brochure in Spanish in Latino community organizations, including at Ibero</p>	<p>In addition to our general recruitment activities, Vertus hired Freddy Colon, a civic leader, to help increase our reach in the Latino Community, particularly at local events. To recruit English language learners we have distributed the school brochure in Spanish to Latino community organizations, and through businesses, and schools, including #28 school, all with a majority of Spanish-speaking families. We also are advertising extensively on Poder, a local bi-</p>

ge Learner s	offices, and through businesses, and schools, including #28 school, all with a majority of Spanish –speaking families. We also went door-to-door in neighborhoods with Latino families. These efforts led to a higher rate of ELL enrollees than in the previous two years.	lingual station serving the Latino community and with bi-lingual ads on city buses that serve Latino neighborhoods. Bi-lingual staff have attended several community events, including the widely attended Puerto Rican Festival and free Latino Band on the Bricks concert. In addition, a team of bi-lingual staff are making home visits to potential Spanish speaking families. Vertus also hired a bi-lingual community member to help Spanish speaking families through our enrollment process.
Student s with Disabilit ies	In 2016-17 Vertus’ overall recruitment strategy again successfully resulted in Vertus enrolling students with disabilities at the significantly higher rate of 23% than the disability rate of our local district. This did not require a specific strategy in this area.	Since Vertus’ rate of enrolling students with disabilities has exceeded the district rate in each of our first three years, our current recruiting strategy assumes that our general efforts will again result in a rate of students with disabilities which exceed the district’s.

Retention Efforts Toward Meeting Targets

	Describe Efforts Toward Meeting Retention Targets 2016-17)	Describe Plans Toward Meeting Retention Targets 2017-18)
Econom ically Disadva ntaged	Vertus’ educational model and programs were designed to meet the needs of young men who are economically disadvantaged. We believe that almost all of our students meet criteria for free and reduced lunch (about 80% are verified as eligible through the community option at Rochester City School District). Generally, Vertus seeks to retain students by providing each student with the structure and support of a learning team led by a full-time mentor called a Preceptor. In part toward retaining students, Preceptors are expected to call each of their student’s families at least once every two weeks. In addition, Vertus Preceptors make 1 – 2 home visits in the summer and early fall for each newly entering student. Family Nights for enrolling families are held each August. Family Nights also are held three times annually where students, meet with their parent/guardian, Preceptor and team’s lead teacher to review students’ progress.	Vertus’ educational model and programs were designed to meet the needs of young men who are economically disadvantaged. Generally, Vertus seeks to retain students by providing each student with the structure and support of a learning team led by a full-time mentor called a Preceptor. In part, toward retaining students, Preceptors are expected to call each of their student’s families at least once every two weeks. In addition, Vertus Preceptors make 1 – 2 home visits in the summer and early fall for each newly entering student. Family Nights for enrolling families are held each August. Family Nights also are held three times annually where families (students and their parent/guardian) meet with their Preceptor and team’s lead teacher to review their each student’s individual progress and needs.
English Language	In addition to our more general efforts at retention, our ELL students have regular access through their online curriculum to	In addition to continuing the general efforts described regarding this area for 2016-17, such as having regular access through our online curriculum to instruction in Spanish and providing social and emotional support

Learners	instruction in Spanish. Bi-lingual staff are available to help students and communicate with families.	through our team/Preceptor model, to better assist and retain ELL students and families in 2017-18 Vertus has increased its bi-lingual staff from three to five.
Students with Disabilities	Vertus' retention rate for students with disabilities exceeds its overall retention rate. Our success in this area reflects our programs' capacity to meet students individual needs through our use of SPED certified teachers, special features in our online curriculum, extra support provided by our team structure/Preceptor model, and regular communication with parents/guardians.	In 2016-17 Vertus' retention rate for students with disabilities continued to exceed its overall retention rate. Our success in this area reflects our programs' capacity to meet students individual needs through our use of SPED certified teachers, special features in our online curriculum, extra support provided by our team structure/Preceptor model, and regular communication with parents/guardians. For 2017-18 Vertus has expanded staff with a full-time behavior specialist to provide additional support to ED students and six full-time Teaching Fellows to assist in implementing the RTI process and provide academic support in the school's six learning labs.



Entry 12 Classroom Teacher and Administrator Attrition

Created: 07/26/2017 • Last updated: 07/28/2017

Report changes in teacher and administrator staffing.

Instructions for completing the Classroom Teacher and Administrator Attrition Tables

Charter schools must complete the two tables named 2016-2017 Classroom Teacher and Administrator Attrition to report changes in teacher and administrator staffing in 2016-2017. Please provide the full time equivalent (FTE) of staff on June 30, 2016; the FTE for any departed staff from July 1, 2016 through June 30, 2017; the FTE for added staff from July 1, 2016 through June 30, 2017; and the FTE of staff added in newly created positions from July 1, 2016 through June 30, 2017 using the two tables provided.

Classroom Teacher Attrition Table

	FTE Classroom Teachers on June 30, 2016	FTE Classroom Teachers Departed 7/1/16 - 6/30/17	FTE Classroom Teachers Filling Vacant Positions 7/1/16 - 6/30/17	FTE Classroom Teachers Added in New Positions 7/1/16 - 6/30/17	FTE of Classroom Teachers on June 30, 2017
	9	2	2	7	16

Administrator Position Attrition Table

	FTE Administrative Positions on June 30, 2016	FTE Administrators Departed 7/1/16 - 6/30/17	FTE Administrators Filling Vacant Positions 7/1/16 - 6/30/17	FTE Administrators Added in New Positions 7/1/16 - 6/30/17	FTE Administrative Positions on June 30, 2017
	4	2	2	1	5

Thank you



Entry 13 Uncertified Teachers

Created: 07/26/2017 • Last updated: 08/01/2017

FTE Count of All Teachers 16
(Certified and Uncertified) as of
June 30, 2017

FTE Count of All Certified 11
Teachers as of June 30, 2017

Instructions for Reporting Percent of Uncertified Teachers

The table below is reflective of the information collected through the online portal for compliance with New York State Education Law 2854(3)(a-1) for teaching staff qualifications. Enter the relevant full time equivalent (FTE) count of teachers in each column. For example, a school with 20 full time teachers and 5 half time teachers would have an FTE count of 22.5. If more than one column applies to a particular teacher, please select one column for the FTE count. Please do not include paraprofessionals, such as teacher assistants.

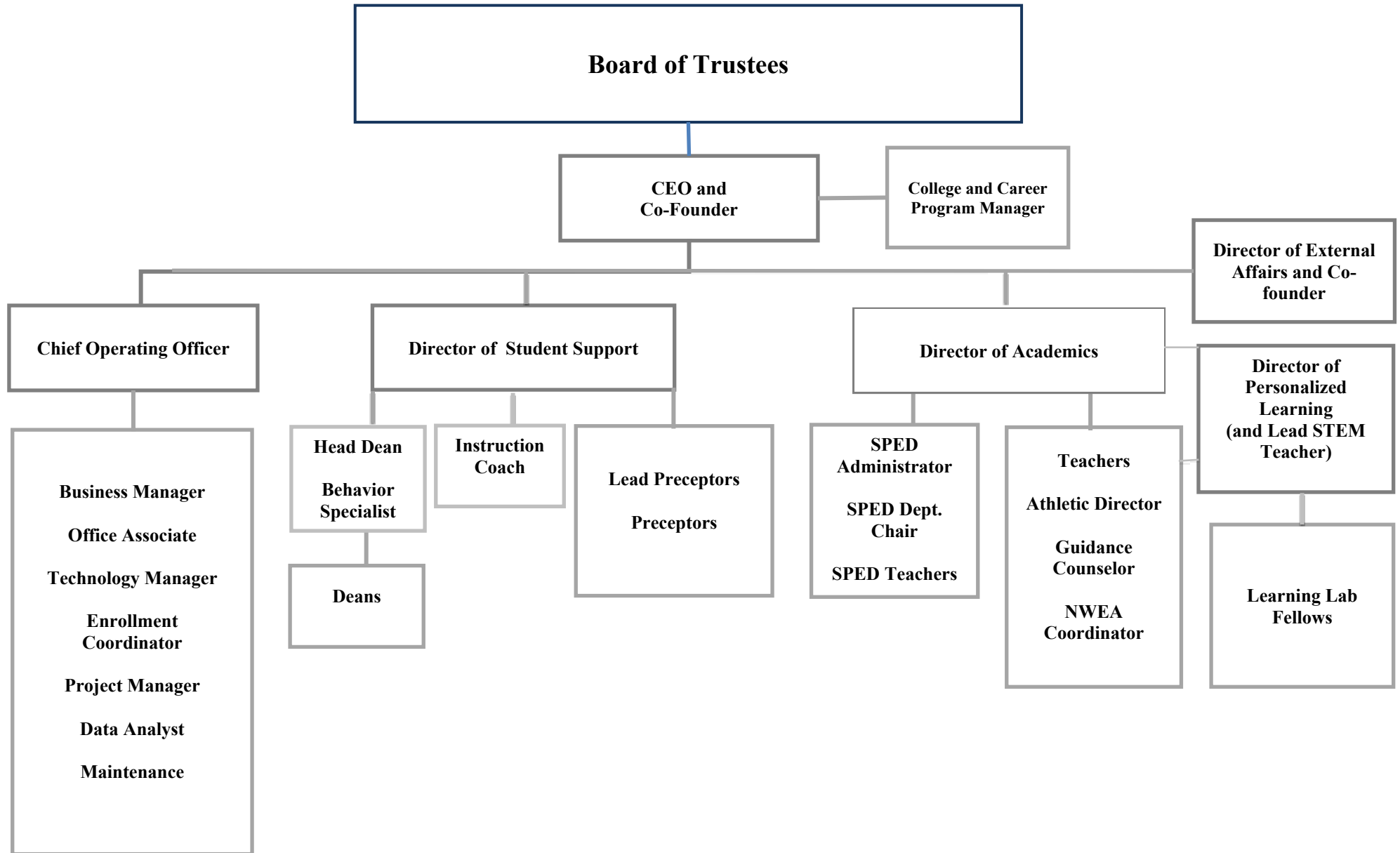
FTE count of uncertified teachers on June 30, 2017, and each uncertified teacher should be counted only once.

1. Total FTE count of uncertified teachers (6-30-17)	5
2. FTE count of uncertified teachers with at least three years of elementary, middle or secondary classroom teaching experience (6-30-17)	3
3. FTE count of uncertified teachers who are tenured or tenure track college faculty (6-30-17)	1
4. FTE count of uncertified teachers with two years of Teach for America experience (6-30-17)	0
5. FTE count of uncertified teachers with exceptional business, professional, artistic, athletic, or military experience (6-30-17)	1
6. FTE count of uncertified teachers who do not fit into any of the prior four categories (6-30-17)	0

Thank you.

Vertus Charter School

Organizational Chart 7.20.17





Vertus
HIGH SCHOOL

FOR STAFF

2017-18 Academic Calendar

August 2017				
Mo	Tu	We	Th	Fr
	1	2	3	4
7	8	9	10	11
14	15	16	17	18
21	22	23	24	25
28	29	30	31	

August 15th - Last Day of Summer Session
August 16th - 17th - Regents Exams

September 2017				
Mo	Tu	We	Th	Fr
4	5			
11	12	13	14	15
18	19	20	21	22
25	26	27	28	29

4: Labor Day
5: Students Off, Staff Report
6: Students Begin 2017-2018

October 2017				
Mo	Tu	We	Th	Fr
16	17	18	19	20
23	24	25	26	27
30	31			

6: Students Off, Staff Report
9: Columbus Day

November 2017				
Mo	Tu	We	Th	Fr
		1	2	3
6	7	8	9	10
13	14	15	16	17
20	21	22	23	24
27	28	29	30	

10: Veterans Day
21: Marking Period 1 Ends
22-24: Thanksgiving Recess

December 2017				
Mo	Tu	We	Th	Fr
				1
4	5	6	7	8
11	12	13	14	15
18	19	20	21	22
25	26	27	28	29

21-29: Winter Recess

January 2018				
Mo	Tu	We	Th	Fr
1	2	3	4	5
8	9	10	11	12
15	16	17	18	19
22	23	24	25	26
29	30	31		

1: New Year's Day Holiday
15: MLK Day
22-25: Regents Exams
25: Marking Period 2 Ends

February 2018				
Mo	Tu	We	Th	Fr
			1	3
5	6	7	8	9
12	13	14	15	16
19	20	21	22	23
26	27	28		

19-23: February Recess

March 2018				
Mo	Tu	We	Th	Fr
			1	2
5	6	7	8	9
12	13	14	15	16
19	20	21	22	
26	27	28	29	

29: Marking Period 3 Ends
30: Good Friday

April 2018				
Mo	Tu	We	Th	Fr
2	3	4	5	6
9	10	11	12	13
16	17	18	19	20
	24	25	26	27

- g Recess
nts Off, Staff Report

May 2018				
Mo	Tu	We	Th	Fr
	1	2	3	4
7	8	9	10	11
14	15	17	18	19
21	22	23	24	25
28	29	30	31	

25-28: Memorial Day Break

June 2018				
Mo	Tu	We	Th	Fr
4	5	6	7	
11	12	13	14	
18	19	20	21	22
25	26			

12-21: Regents Exa
21: Marking Period 4
22: Students Off, Sta

July 2018				
	Tu	We	Th	Fr
	3	4	5	6
	10	11	12	13
	17	18	19	20
23	24	25	26	27

August 2018				
Mo	Tu	We	Th	Fr
		1	2	3
6	7	8	9	10
13	14	15	16	17
20	21	22	23	24

-

Sept				
Mo	Tu	We	Th	Fr
3				
10	11	12	13	14
17	18	19	20	21
24	25	26	27	28

5: First Day of School 2018-2019



Students Off, Staff Report
Marking Period Ends